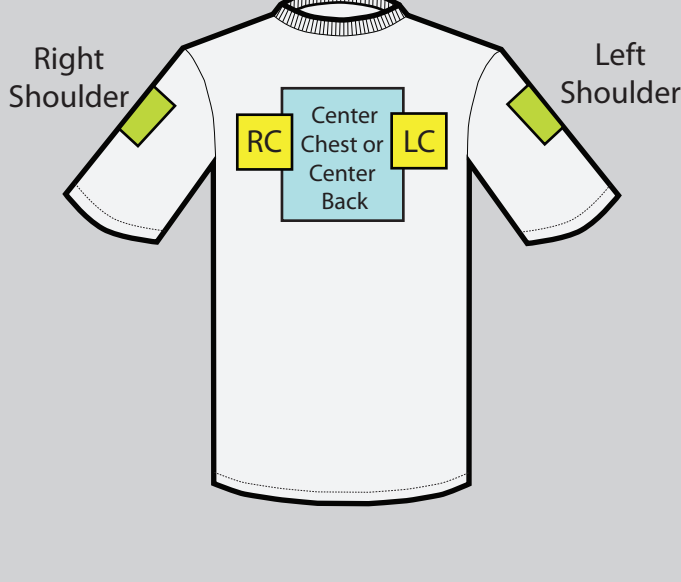


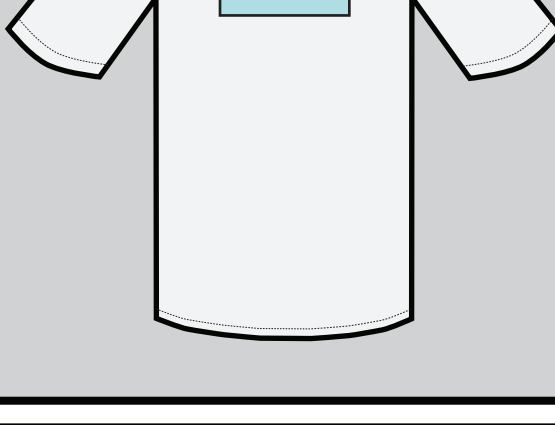
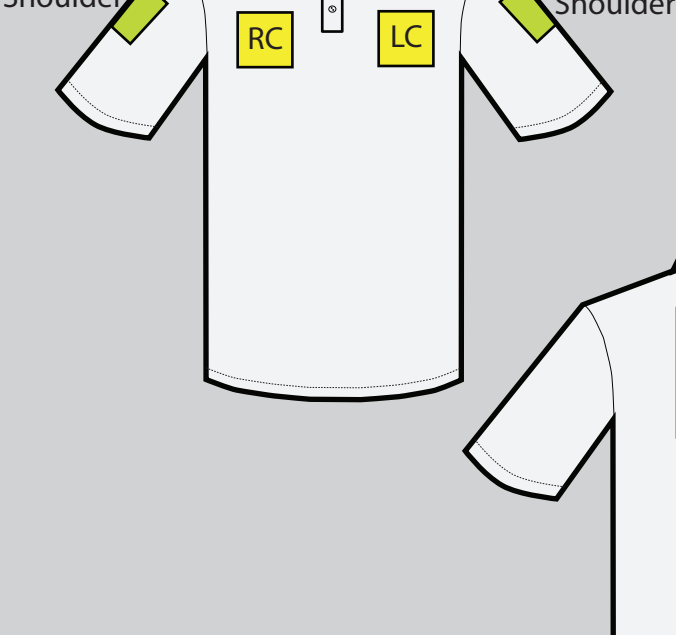
# T-Shirt Placements

Embroidery, tackle twill / applique, or heat applied graphics can be used to decorate t-shirts in any of the placement locations. We will not embroider or tackle twill / applique any t-shirts weighing less than 5.5 ounces.



# Polo Shirt Placements

Embroidery, tackle twill / applique, or heat applied graphics can be used to decorate polo shirts in any of the placement locations. We will not embroider or tackle twill / applique any polo shirts weighing less than 5.5 ounces.



# Shirt Placements

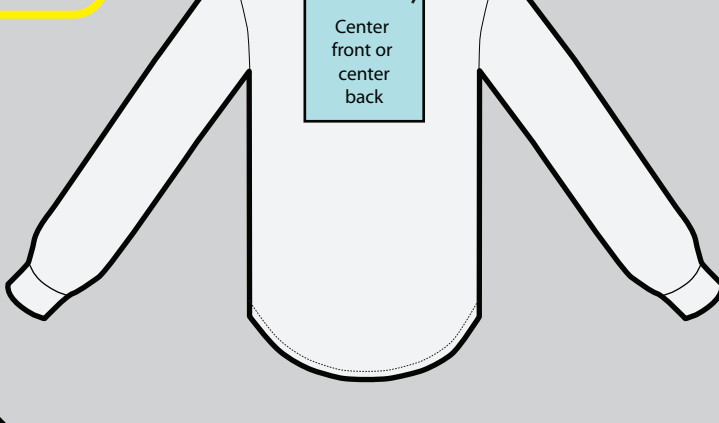
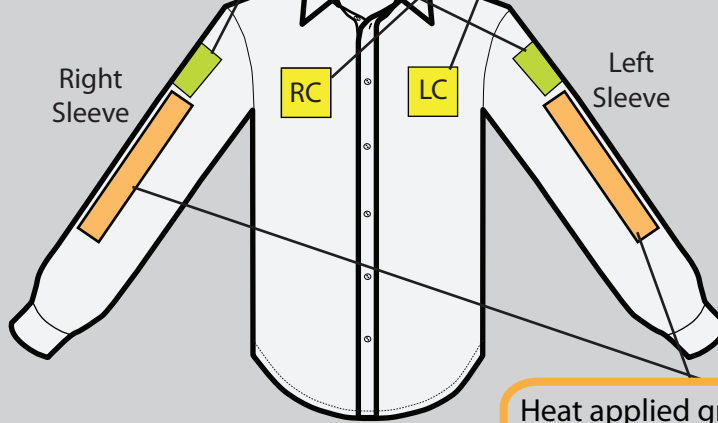
\*\*Not every type of decoration is available in all placement locations. Heat applied split front designs may be applied to the center front of button down shirts.

Embroidery, tackle twill / applique, or heat applied graphics can be used to decorate shirts in any of the placement locations.

Embroidery, tackle twill / applique, or heat applied graphics on the center back.

Embroidery or heat applied graphics on the left or right shoulder sleeve.

Embroidery, tackle twill / applique, or heat applied graphics on the left chest, or right chest.

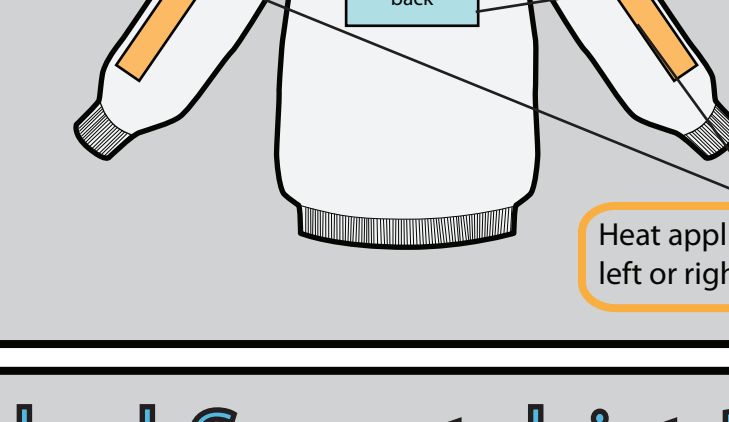


Heat applied graphics along the left or right sleeve vertically.

# Sweatshirt Placements

\*\*Not every type of decoration is available in all placement locations.

Embroidery or heat applied graphics on the left or right shoulder sleeve.



Embroidery, tackle twill / applique, or heat applied graphics on the left chest, right chest, center front or center back.

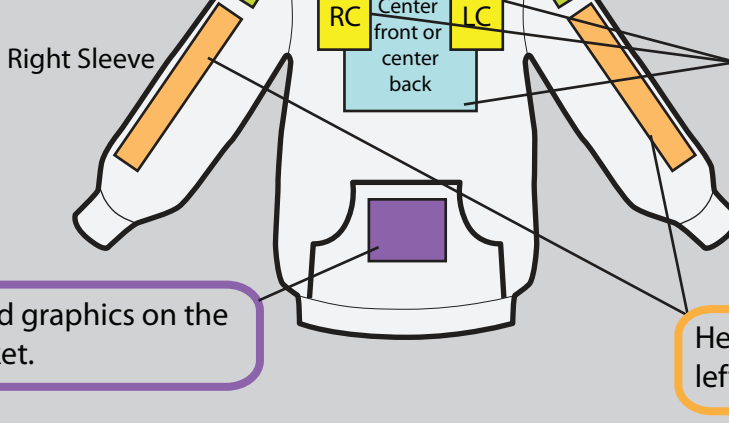
Heat applied graphics along the left or right sleeve vertically.

# Hooded Sweatshirt Placements

\*\*Not every type of decoration is available in all placement locations.

Embroidery or heat applied graphics on the hood.

Embroidery or heat applied graphics on the left or right shoulder sleeve.



Embroidery, tackle twill / applique, or heat applied graphics on the left chest, right chest, center front or center back.

Heat applied graphics on the pouch pocket.

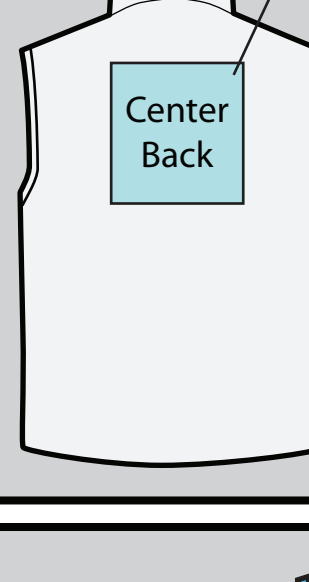
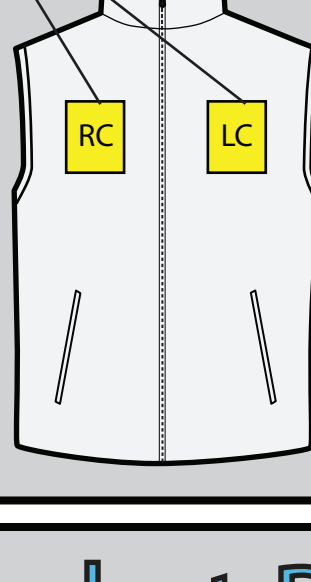
Heat applied graphics along the left or right sleeve vertically.

# Vest Placements

Heat applied split front designs may be applied to the center front of vests with zippers.

Embroidery, tackle twill / applique, or heat applied graphics on the left chest, or right chest.

Embroidery, tackle twill / applique, or heat applied graphics on the center back.

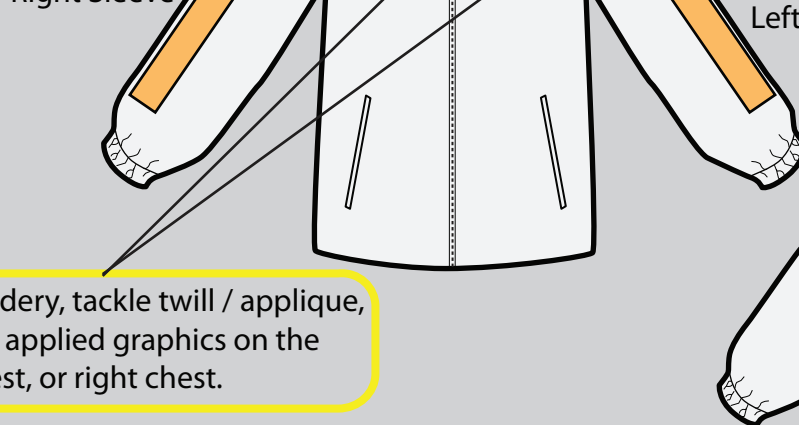


# Jacket Placements

\*\*Not every type of decoration is available in all placement locations. Heat applied split front designs may be applied to the center front of jackets with zippers.

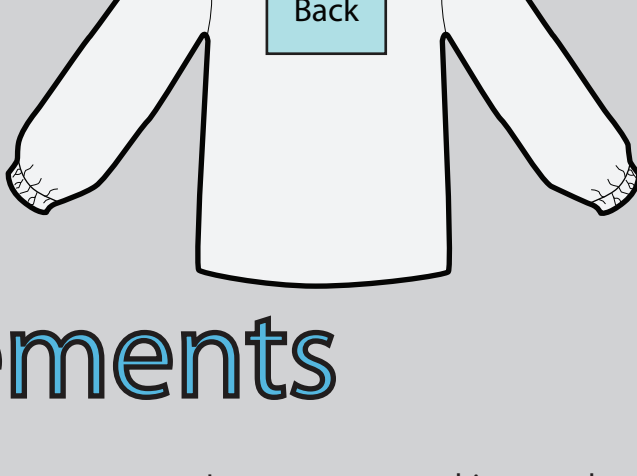
Embroidery or heat applied graphics on the left or right shoulder sleeve.

Heat applied graphics along the left or right sleeve vertically.



Embroidery, tackle twill / applique, or heat applied graphics on the center back.

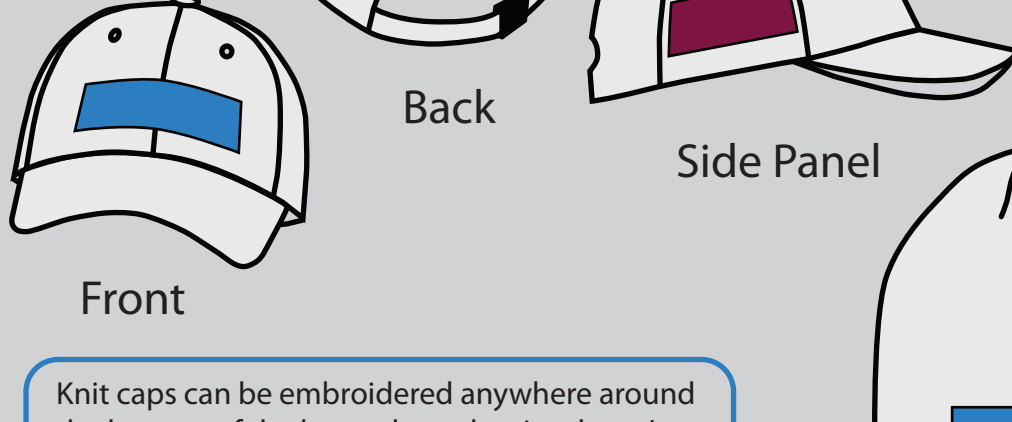
Embroidery, tackle twill / applique, or heat applied graphics on the left chest, or right chest.



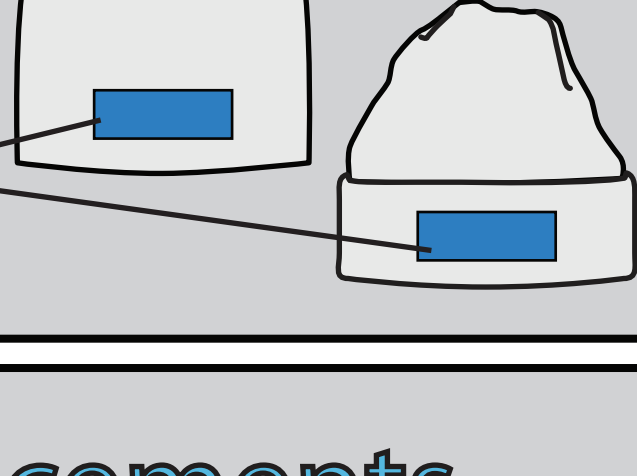
# Hat Placements

• Logos, text or graphics must be no larger than 4.5" wide by 2" tall.

• Any text must be no smaller than 1/4" tall in order to be embroidered legibly.

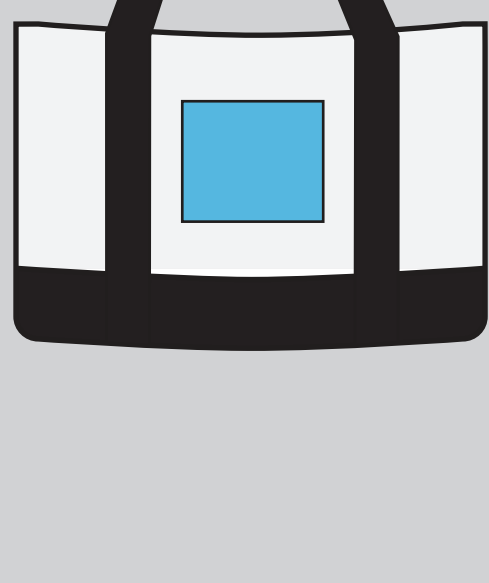
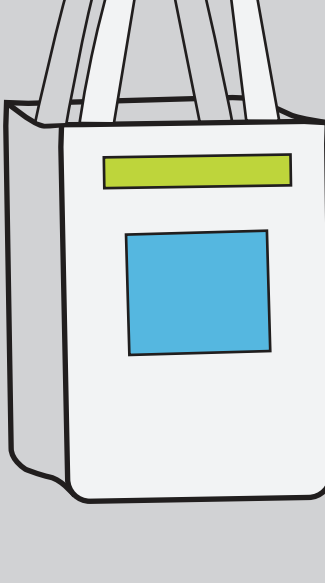


Knit caps can be embroidered anywhere around the bottom of the hat, as long as the size doesn't exceed 4.5" wide and 2" tall.



# Tote Bag Placements

Embroidery, tackle twill / applique, or heat applied graphics can be used to decorate tote bags in any of the placement locations.



# Blanket Placements

Embroidery, tackle twill / applique, or heat applied graphics can be used to decorate blankets in any of the placement locations.

